

FINANCIAL FACT BOOK 2017

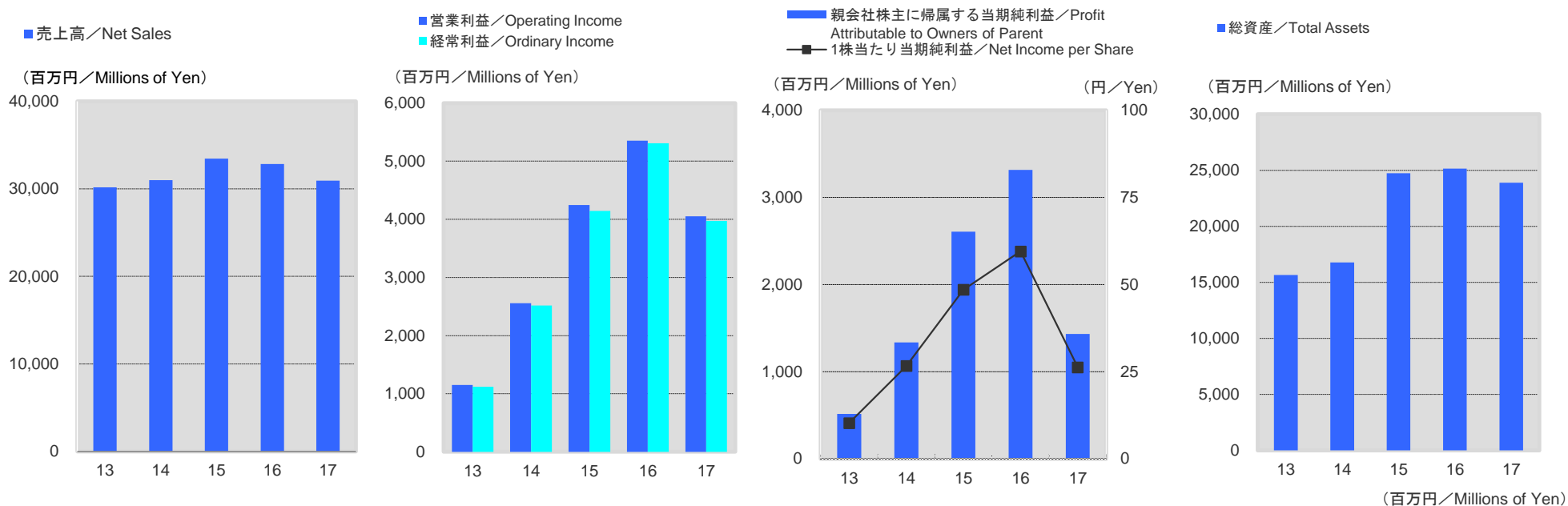
フィナンシャル ファクトブック 2017

目次	Contents
1	連結財務ハイライト Consolidated Financial Highlights
2	四半期推移(連結) Quarter by Trend(Consolidated)
3	販売費及び一般管理費内訳 Selling, General and Administrative Expenses
4	従業員1人あたり売上高、営業利益、当期純利益 Net Sales, Operating Income & Net Income per Employee
5	成長性・収益性 Growth & Profitability
6	効率性 Efficiency
7	安定性 Stability
8	事業関連情報 Key Indicators
9	連結貸借対照表 Consolidated Balance Sheets
11	連結損益計算書 Consolidated Statements of Operations
12	連結キャッシュ・フロー計算書 Consolidated Statements of Cash Flows
13	株式情報 Stock Information
14	会社概要 Corporate Profile

 株式会社エムティーアイ

MTI Ltd.

連結財務ハイライト／Consolidated Financial Highlights



会計年度／Fiscal Year	2013/09	2014/09	2015/09	2016/09	2017/09
売上高／Net Sales	30,160	30,985	33,461	32,844	30,933
売上総利益／Gross Profit	24,824	25,996	28,022	27,490	25,288
営業利益／Operating Income	1,149	2,557	4,245	5,355	4,053
経常利益／Ordinary Income	1,119	2,519	4,144	5,310	3,972
親会社株主に帰属する当期純利益／Profit Attributable to Owners of Parent	516	1,337	2,607	3,317	1,434
1株当たり当期純利益／Net Income per Share*1 (円／Yen)	10.25	26.63	48.52	59.54	26.27
総資産／Total Assets	15,646	16,768	24,738	25,154	23,897
純資産／Net Assets	8,869	9,722	16,591	17,852	17,937
営業活動によるキャッシュ・フロー／Cash Flows from Operating Activities	3,483	3,600	4,587	4,845	3,442
投資活動によるキャッシュ・フロー／Cash Flows from Investing Activities	(2,389)	(1,867)	(1,707)	(1,327)	(3,874)
財務活動によるキャッシュ・フロー／Cash Flows from Financing Activities	(414)	(375)	3,921	(2,469)	(2,068)

*1 当社は2013年4月1日を効力発生日として普通株式1株につき100株の割合で株式分割を行っています。／We conducted a 100-for-1 share split which became effective as of April 1, 2013.

当社は2014年4月1日を効力発生日として普通株式1株につき2株の割合で株式分割を行っています。／We conducted a 2-for-1 share split which became effective as of April 1, 2014.

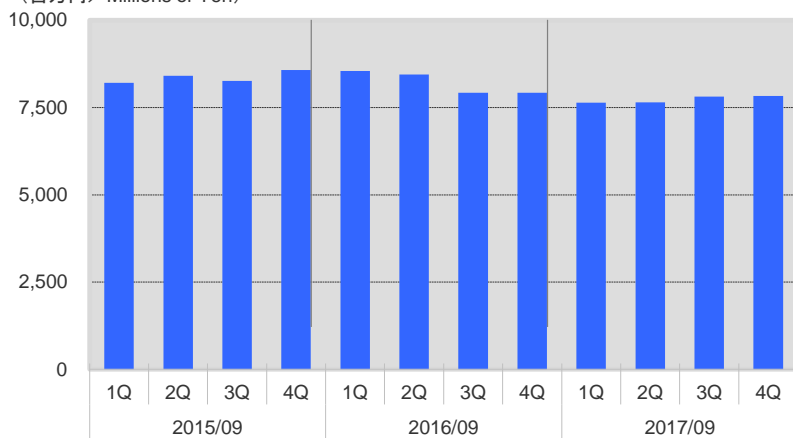
当社は2015年4月1日を効力発生日として普通株式1株につき2株の割合で株式分割を行っています。／We conducted a 2-for-1 share split which became effective as of April 1, 2015.

1株当たり当期純利益は当該株式分割後の数値を記載しています。／Net income per share is based on the number of shares after the stock splits.

四半期推移(連結)／Quarter by Trend (Consolidated)

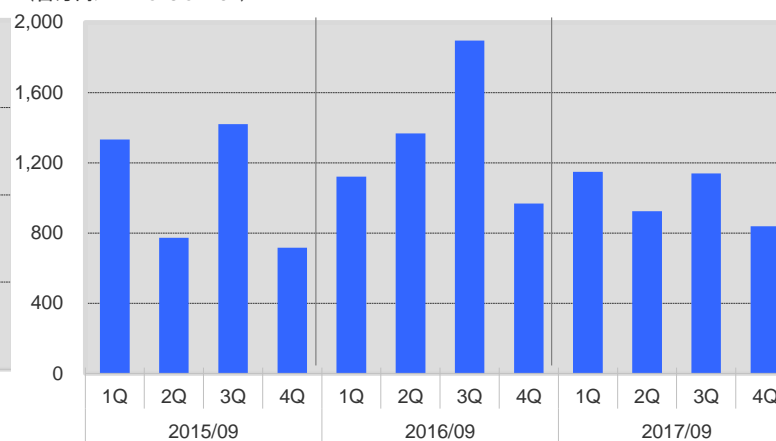
売上高／Net Sales

(百万円／Millions of Yen)



営業利益／Operating Income

(百万円／Millions of Yen)



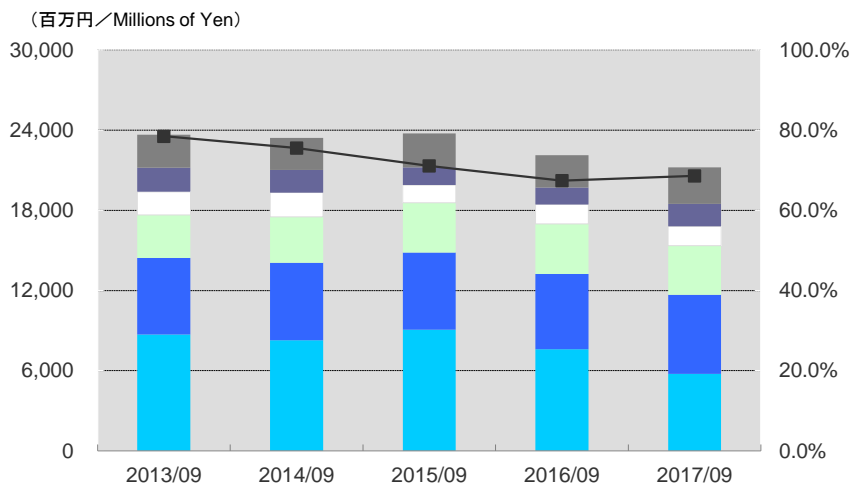
会計年度／Fiscal Year

(百万円／Millions of Yen)

	2015/09				2016/09				2017/09			
	1Q	2Q	3Q	4Q	1Q	2Q	3Q	4Q	1Q	2Q	3Q	4Q
売上高／Net Sales	8,209	8,410	8,261	8,579	8,547	8,447	7,924	7,924	7,637	7,648	7,811	7,837
売上総利益／Gross Profit	6,865	7,088	6,979	7,088	7,184	7,175	6,630	6,500	6,362	6,417	6,277	6,230
営業利益／Operating Income	1,333	774	1,420	717	1,121	1,367	1,896	969	1,149	925	1,139	839
経常利益／Ordinary Income	1,315	719	1,405	704	1,117	1,317	1,894	981	1,125	907	1,143	796
親会社株主に帰属する当期純利益／Profit Attributable to Owners of Parent	761	327	855	663	697	727	1,195	696	677	(235)	703	289
総資産／Total Assets	16,742	22,732	22,831	24,738	23,884	23,045	23,277	25,154	23,043	24,096	23,228	23,897
純資産／Net Assets	10,347	15,172	15,932	16,591	16,876	15,623	17,242	17,852	17,195	17,384	17,650	17,937

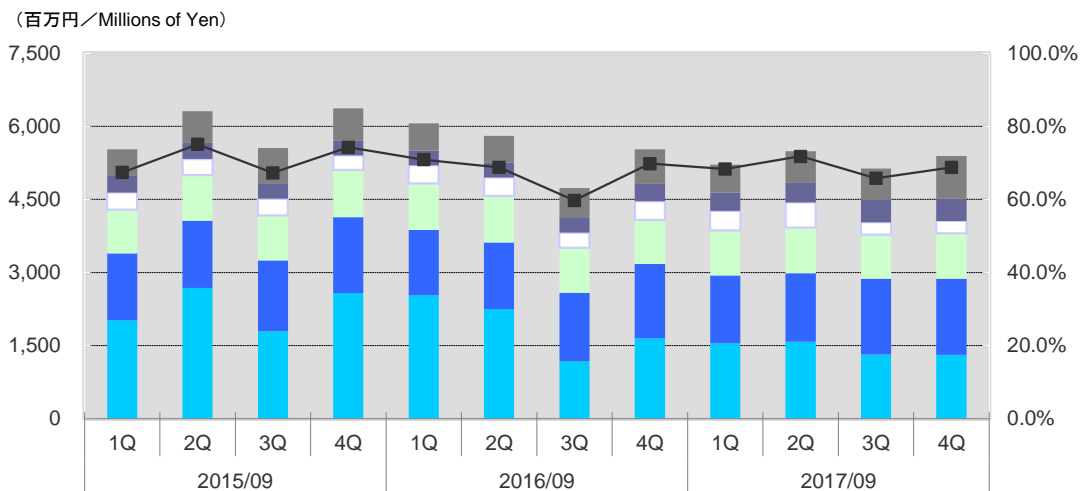
販売費及び一般管理費内訳／Selling, General and Administrative Expenses

■ 広告宣伝費／Advertising Expenses
■ 支払手数料／Commission Fee
■ 人件費／Personnel Expenses
■ 減価償却費／Depreciation
■ 販管費率／SGA Ratio
■ 外注費／Subcontract Expenses
■ その他／Other



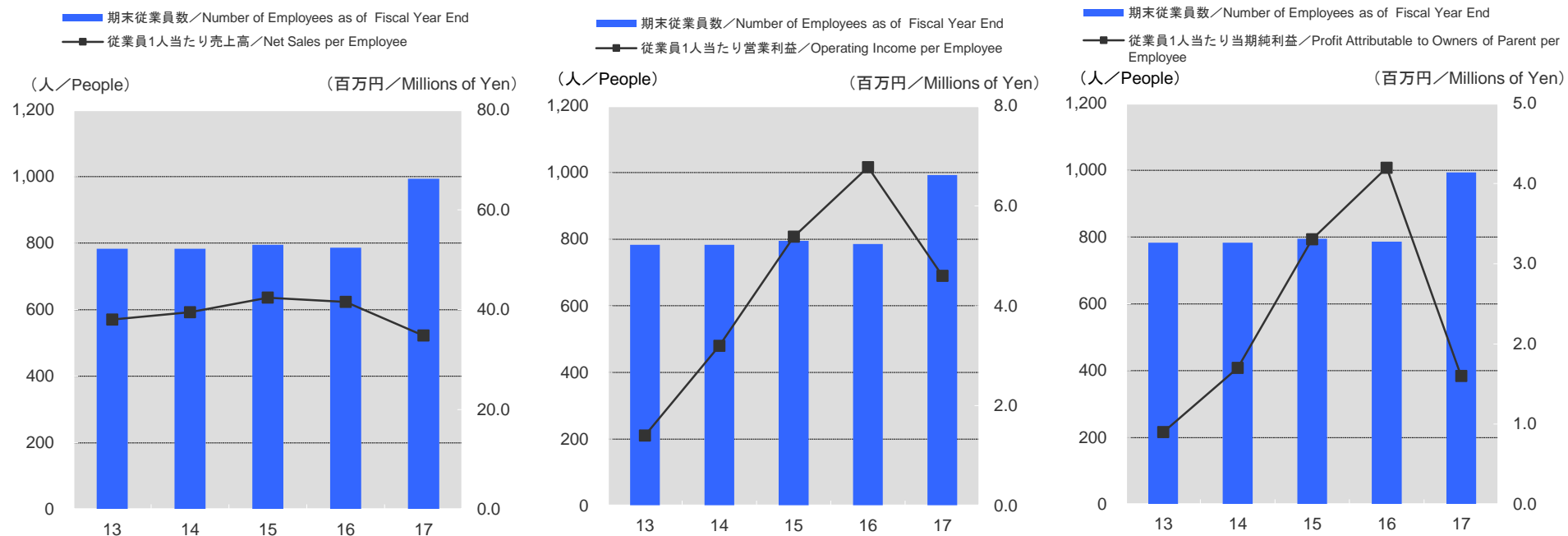
会計年度	(百万円／Millions of Yen)				
Fiscal Year	2013/09	2014/09	2015/09	2016/09	2017/09
販売費及び一般管理費	23,675	23,439	23,776	22,135	21,234
Selling, General and Administrative Expenses					
広告宣伝費	8,702	8,268	9,077	7,607	5,746
Advertising Expenses					
人件費	5,722	5,815	5,770	5,637	5,922
Personnel Expenses					
支払手数料	3,227	3,443	3,727	3,741	3,698
Commission Fee					
外注費	1,741	1,803	1,326	1,456	1,432
Subcontract Expenses					
減価償却費	1,802	1,706	1,318	1,272	1,690
Depreciation					
その他	2,479	2,402	2,555	2,420	2,743
Other					
			(%)	(%)	
販管費率	78.5%	75.6%	71.1%	67.4%	68.6%
Selling, General and Administrative Ratio					
売上高	30,160	30,985	33,461	32,844	30,933
Net Sales					

■ 広告宣伝費／Advertising Expenses
■ 支払手数料／Commission Fee
■ 人件費／Personnel Expenses
■ 減価償却費／Depreciation
■ 販管費率／SGA Ratio
■ 外注費／Subcontract Expenses
■ その他／Other



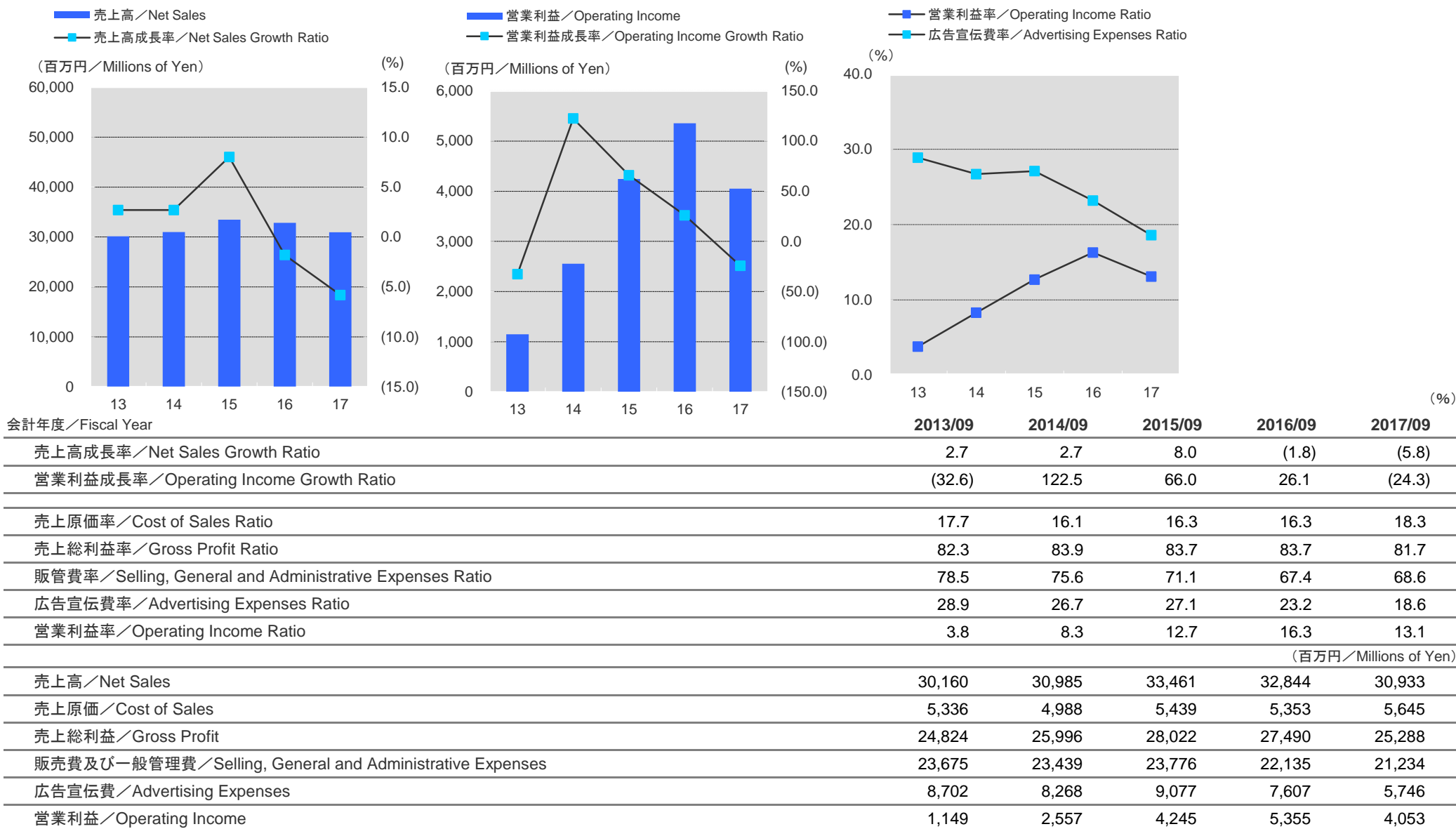
会計年度	2015/09				2016/09				2017/09			
Fiscal Year	1Q	2Q	3Q	4Q	1Q	2Q	3Q	4Q	1Q	2Q	3Q	4Q
販売費及び一般管理費	5,532	6,313	5,559	6,371	6,062	5,807	4,734	5,530	5,213	5,492	5,137	5,391
Selling, General and Administrative Expenses												
広告宣伝費	2,021	2,680	1,795	2,580	2,532	2,246	1,180	1,648	1,542	1,578	1,317	1,307
Advertising Expenses												
人件費	1,374	1,382	1,454	1,558	1,341	1,368	1,402	1,525	1,395	1,406	1,554	1,566
Personnel Expenses												
支払手数料	896	938	923	968	954	955	923	908	926	935	904	932
Commission Fee												
外注費	350	331	344	299	374	384	314	382	402	519	255	253
Subcontract Expenses												
減価償却費	353	341	314	309	298	303	316	354	374	401	458	456
Depreciation												
その他	535	638	726	654	561	549	597	711	572	650	647	874
Other												
								(%)				(%)
販管費率	67.4%	75.1%	67.3%	74.3%	70.9%	68.8%	59.7%	69.8%	68.3%	71.8%	65.8%	68.8%
Selling, General and Administrative Ratio												
売上高	8,209	8,410	8,261	8,579	8,547	8,447	7,924	7,924	7,637	7,648	7,811	7,837
Net Sales												

従業員1人当たり売上高、営業利益、当期純利益／Net Sales, Operating Income & Net Income per Employee

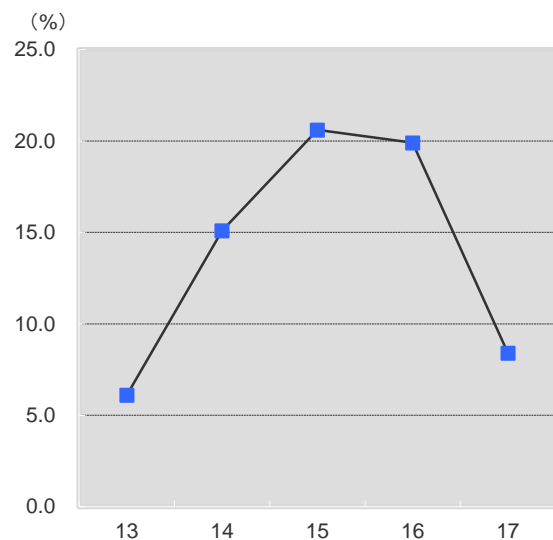


会計年度／Fiscal Year	2013/09	2014/09	2015/09	2016/09	2017/09
期末従業員数／Number of Employees as of Fiscal Year End	783	783	795	786	993
従業員1人当たり売上高／Net Sales per Employee	38.0	39.5	42.4	41.5	34.8
従業員1人当たり営業利益／Operating Income per Employee	1.4	3.2	5.4	6.8	4.6
従業員1人当たり当期純利益／Profit Attributable to Owners of Parent per Employee	0.9	1.7	3.3	4.2	1.6
従業員1人当たり売上高＝売上高 ÷ 従業員数(期中平均)／Consolidated Net sales per Employee = Net Sales ÷ Average of Beginning and Ending Number of Employee					
従業員1人当たり営業利益＝営業利益 ÷ 従業員数(期中平均)／Consolidated Operating Income per Employee = Operating Income ÷ Average of Beginning and Ending Number of Employee					
従業員1人当たり当期純利益＝親会社株主に帰属する当期純利益 ÷ 従業員数(期中平均)／Consolidated Net Income per Employee = Profit Attributable to Owners of Parent ÷ Average of Beginning and Ending Number of Employee					
売上高／Net Sales	30,160	30,985	33,461	32,844	30,933
営業利益／Operating Income	1,149	2,557	4,245	5,355	4,053
親会社株主に帰属する当期純利益／Profit Attributable to Owners of Parent	516	1,337	2,607	3,317	1,434

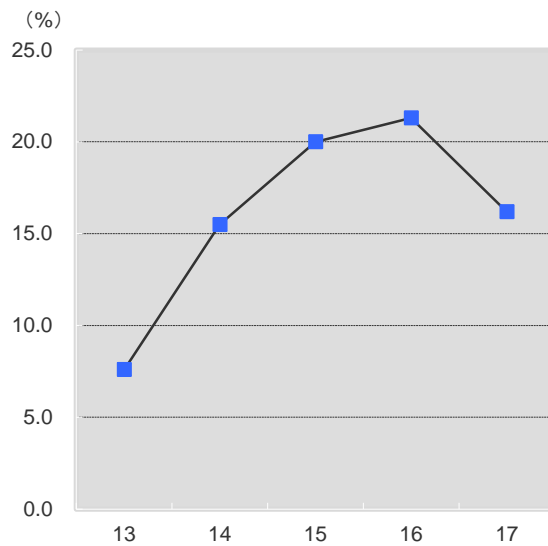
成長性・収益性／Growth & Profitability



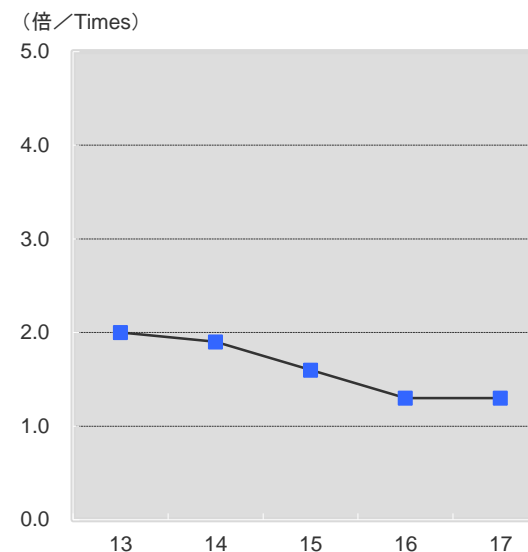
自己資本当期利益率/Return on Equity (ROE)



総資産経常利益率/Return on Asset (ROA)



総資産回転率/Asset Turnover



会計年度/Fiscal Year

		2013/09	2014/09	2015/09	2016/09	2017/09
自己資本当期純利益率/Return on Equity (ROE)	(%)	6.1	15.1	20.6	19.9	8.4
総資産経常利益率/Return on Asset (ROA)	(%)	7.6	15.5	20.0	21.3	16.2
総資産回転率/Asset Turnover	(倍/Times)	2.0	1.9	1.6	1.3	1.3

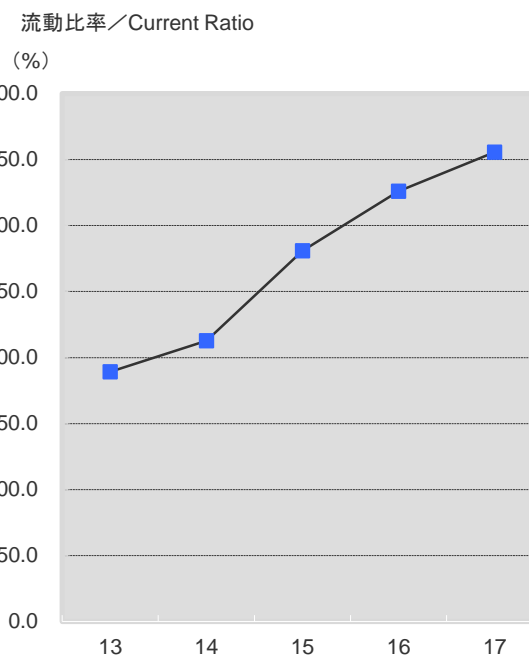
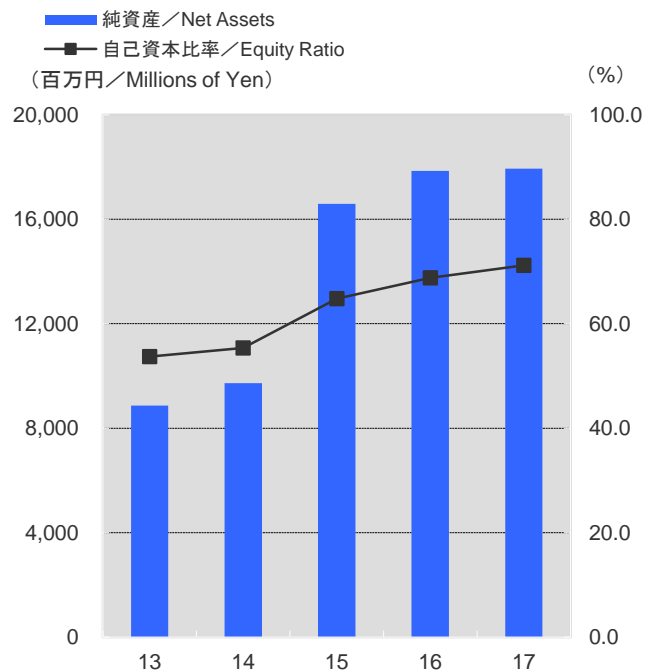
ROE = (当期純利益÷期中平均自己資本)×100/ROE = (Net Income/Average of Beginning and Ending Shareholders' Equity)×100

ROA = (経常利益÷期中平均総資産)×100/ROA = (Ordinary Income/Average of Beginning and Ending Total Assets)×100

(百万円/Millions of Yen)

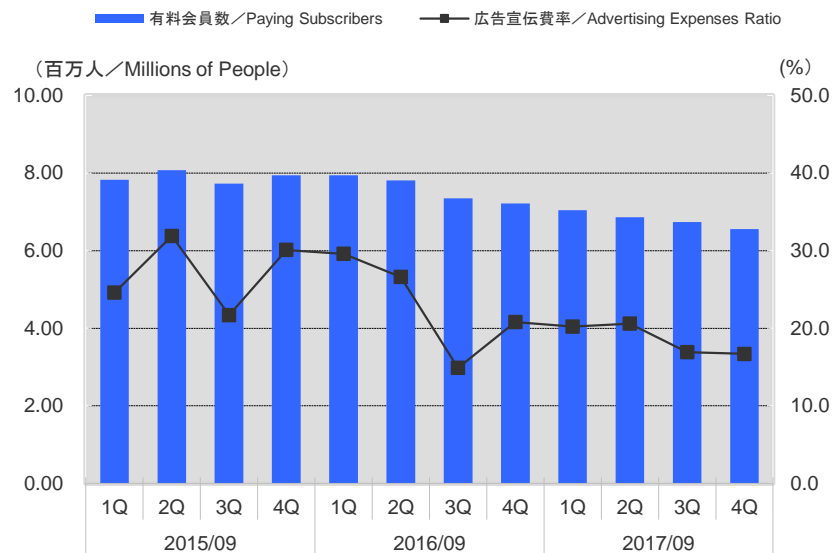
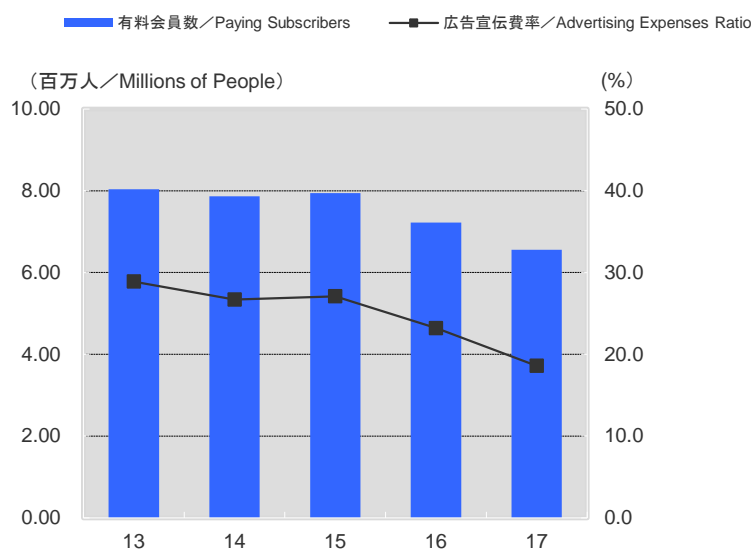
売上高/Net Sales	30,160	30,985	33,461	32,844	30,933
経常利益/Ordinary Income	1,119	2,519	4,144	5,310	3,972
親会社株主に帰属する当期純利益/Profit Attributable to Owners of Parent	516	1,337	2,607	3,317	1,434
純資産/Net Assets	8,869	9,722	16,591	17,852	17,937
総資産/Total Assets	15,646	16,768	24,738	25,154	23,897

安定性/Stability



会計年度/Fiscal Year	2013/09	2014/09	2015/09	2016/09	2017/09
自己資本比率/Equity Ratio	53.7	55.4	64.8	68.8	71.2
流動比率/Current Ratio	189.3	212.7	281.0	326.1	355.6
	(百万円/Millions of Yen)				
純資産/Net Assets	8,869	9,722	16,591	17,852	17,937
総資産/Total Assets	15,646	16,768	24,738	25,154	23,897
流動資産/Total Current Assets	10,768	12,183	20,211	20,051	17,366
流動負債/Total Current Liabilities	5,687	5,727	7,193	6,148	4,883

事業関連情報／Key Indicators



有料会員数、広告宣伝費／Paying Subscribers and Advertising Expenses

会計年度／ Fiscal Year	2013/09	2014/09	2015/09	2016/09	2017/09
有料会員数／ Paying Subscribers	8.04	7.86	7.94	7.22	6.56
	(百万人／Millions of People)				
広告宣伝費／ Advertising Expenses	8,702	8,268	9,077	7,607	5,746
	(百万円／Millions of Yen)				
広告宣伝费率／ Advertising Expenses Ratio	28.9	26.7	27.1	23.2	18.6
	(%)				
売上高／ Net Sales	30,160	30,985	33,461	32,844	30,933
	(百万円／Millions of Yen)				

会計年度／ Fiscal Year	2015/09				2016/09				2017/09			
	1Q	2Q	3Q	4Q	1Q	2Q	3Q	4Q	1Q	2Q	3Q	4Q
有料会員数／ Paying Subscribers	7.83	8.08	7.73	7.94	7.94	7.81	7.35	7.22	7.04	6.86	6.74	6.56
	(百万人／Millions of People)											
広告宣伝費／ Advertising Expenses	2,021	2,680	1,795	2,580	2,532	2,246	1,180	1,648	1,542	1,578	1,317	1,307
	(百万円／Millions of Yen)											
広告宣伝费率／ Advertising Expenses Ratio	24.6	31.9	21.7	30.1	29.6	26.6	14.9	20.8	20.2	20.6	16.9	16.7
	(%)											
売上高／ Net Sales	8,209	8,410	8,261	8,579	8,547	8,447	7,924	7,924	7,637	7,648	7,811	7,837
	(百万円／Millions of Yen)											

連結貸借対照表／Consolidated Balance Sheets

MTI Ltd. and Consolidated Subsidiaries

September 30, 2013, 2014, 2015, 2016 and 2017

資産の部／Assets

(百万円／Millions of Yen)

会計年度／Fiscal Year	2013/09	2014/09	2015/09	2016/09	2017/09
流動資産／Current Assets	10,768	12,183	20,211	20,051	17,366
現金及び預金／Cash and Deposits	3,416	4,782	11,608	12,613	10,133
受取手形及び売掛金／Notes and Accounts Receivable-trade	6,376	6,294	6,885	6,163	6,187
前渡金／Advance Payments - trade	178	139	101	395	235
前払費用／Prepaid Expenses	278	470	349	396	360
未収入金／Accounts Receivable-other	135	65	841	84	117
繰延税金資産／Deferred Tax Assets	414	378	358	316	237
その他／Other Current Assets	134	159	138	146	158
貸倒引当金／Allowance for Doubtful Accounts	(166)	(108)	(71)	(65)	(64)
固定資産／Fixed Assets	4,878	4,585	4,526	5,102	6,531
有形固定資産／Tangible Fixed Assets	175	143	146	179	276
建物附属設備／Leasehold Improvements	318	321	331	327	363
減価償却累計額／Accumulated Depreciation	(201)	(221)	(239)	(251)	(267)
工具、器具及び備品／Tools, Furniture and Fixtures	253	267	303	357	499
減価償却累計額／Accumulated Depreciation	(195)	(224)	(248)	(253)	(318)
無形固定資産／Intangible Fixed Assets	2,590	2,177	2,277	2,504	2,198
ソフトウェア／Software	2,346	2,150	2,254	2,462	2,078
その他／Other Intangible Assets	243	27	22	41	120
投資その他の資産／Investments and Other Assets	2,112	2,264	2,103	2,419	4,055
投資有価証券／Investments Securities	714	813	796	1,054	2,437
敷金及び保証金／Leasehold Deposits	469	489	501	494	526
繰延税金資産／Deferred Tax Assets	854	883	792	853	1,018
その他／Other	87	99	30	34	136
貸倒引当金／Allowance for Doubtful Accounts	(14)	(21)	(17)	(17)	(63)
資産の部合計／Total Assets	15,646	16,768	24,738	25,154	23,897

連結貸借対照表／Consolidated Balance Sheets

MTI Ltd. and Consolidated Subsidiaries

September 30, 2013, 2014, 2015, 2016 and 2017

負債の部および純資産 / Liabilities and Net Assets

(百万円／Millions of Yen)

会計年度 / Fiscal Year	2013/09	2014/09	2015/09	2016/09	2017/09
流動負債 / Current Liabilities	5,687	5,727	7,193	6,148	4,883
買掛金 / Accounts Payable - Trade	942	976	1,179	1,177	1,276
1年内返済予定の長期借入金 / Current Portion of Long-term Debt	—	—	518	—	—
1年内償還予定の転換社債 / Corporate Bonds Redeemable Within One Year	78	—	—	—	—
未払金 / Account Payable - other	2,334	2,317	2,571	2,290	1,974
未払費用 / Accrued Expenses	359	442	448	470	430
未払法人税等 / Accrued Income Taxes	637	674	1,354	1,343	668
未払消費税等 / Accrued Consumption Taxes	83	321	368	289	108
コイン等引当金 / Allowance for Coin Usage	382	277	234	188	148
その他 / Other Current Liabilities	869	716	516	389	277
固定負債 / Noncurrent Liabilities	1,090	1,318	953	1,152	1,076
長期借入金 / Long-term Debt	500	500	79	—	—
退職給付引当金 / Provision for Retirement Benefits	509	—	—	—	—
退職給付に係る負債 / Net Defined Benefit liability	—	768	832	1,099	1,020
負ののれん / Negative Goodwill	58	49	40	31	22
その他 / Other Noncurrent Liabilities	21	0	0	21	34
負債合計 / Total Liabilities	6,777	7,045	8,147	7,301	5,960
株主資本 / Shareholders' Equity	8,339	9,318	16,022	17,425	17,022
資本金 / Capital Stock	2,562	2,596	4,947	5,012	5,069
資本剰余金 / Capital Surplus	3,078	3,111	5,469	5,834	5,790
利益剰余金 / Retained Earnings	3,393	4,305	6,300	8,727	9,311
自己株式 / Treasury Shares	(695)	(695)	(695)	(2,148)	(3,148)
その他の包括利益累計額 / Accumulated other comprehensive income	62	(27)	12	(119)	3
その他有価証券評価差額金 / Valuation Difference on Available-for-sale Securities	40	74	83	65	(12)
為替換算調整勘定 / Foreign Currency Translation Adjustment	22	(31)	(7)	(42)	(22)
退職給付に係る調整累計額 / Remeasurements of Defined Benefit Plans	—	(69)	(62)	(141)	39
新株予約権 / Subscription Rights to Shares	227	206	127	132	297
非支配株主持分 / Non-controlling Interests	239	224	429	414	613
純資産合計 / Total Net Assets	8,869	9,722	16,591	17,852	17,937
負債・純資産合計 / Total Liabilities and Net Assets	15,646	16,768	24,738	25,154	23,897

連結損益計算書／Consolidated Statements of Operations

MTI Ltd. and Consolidated Subsidiaries

September 30, 2013, 2014, 2015, 2016 and 2017

(百万円／Millions of Yen)

会計年度 / Fiscal Year	2013/09	2014/09	2015/09	2016/09	2017/09
売上高 / Net Sales	30,160	30,985	33,461	32,844	30,933
売上原価 / Cost of Sales	5,336	4,988	5,439	5,353	5,645
売上総利益 / Gross Profit	24,824	25,996	28,022	27,490	25,288
販売費及び一般販管理費 / Selling, General and Administrative Expenses	23,675	23,439	23,776	22,135	21,234
営業利益 / Operating Income	1,149	2,557	4,245	5,355	4,053
営業外収益 / Non-Operating Income	26	32	56	25	87
受取配当金 / Dividends Income	3	4	6	6	43
その他 / Other	22	27	50	19	42
営業外費用 / Non-operating expenses	55	69	157	70	168
支払利息 / Interest Expense	9	8	4	2	0
持分法による投資損失 / Loss on Equity Investments in Affiliates	30	53	95	44	148
株式交付費 / Share Issuance Cost	—	—	24	2	—
その他 / Other	16	7	32	21	19
経常利益 / Ordinary Income	1,119	2,519	4,144	5,310	3,972
特別利益 / Extraordinary Gains	93	86	807	24	853
特別損失 / Extraordinary Losses	205	376	504	137	2,074
税引等調整前当期純利益 / Income before Income Taxes	1,008	2,229	4,447	5,198	2,751
法人税、住民税及び事業税 / Income Taxes (Current)	603	878	1,673	1,931	1,576
法人税等調整額 / Income Taxes - Deferred	(149)	29	78	22	(130)
当期純利益 / Profit	553	1,321	2,694	3,244	1,305
非支配株主に帰属する当期純利益 / Profit (Loss) Attributable to Non-controlling Interests	36	(16)	87	(73)	(128)
親会社株主に帰属する当期純利益 / Profit Attributable to Owners of Parent	516	1,337	2,607	3,317	1,434

連結キャッシュ・フロー計算書 / Consolidated Statements of Cash Flows

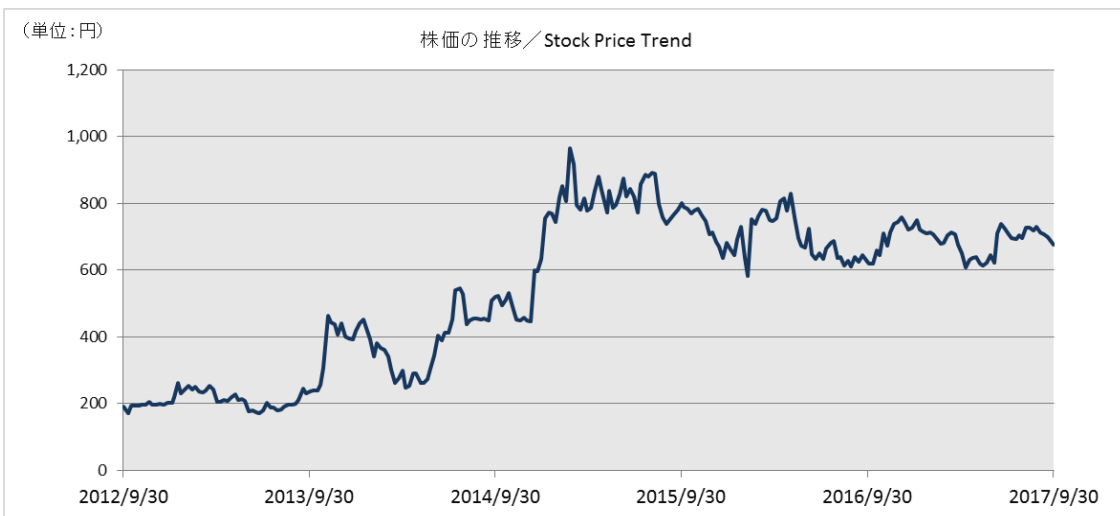
MTI Ltd. and Consolidated Subsidiaries

September 30, 2013, 2014, 2015, 2016 and 2017

会計年度 / Fiscal Year	2013/09	2014/09	2015/09	(百万円 / Millions of Yen)	
				2016/09	2017/09
営業活動によるキャッシュ・フロー / Cash Flows from Operating Activities	3,483	3,600	4,587	4,845	3,442
税金等調整前当期純利益 / Income before Income Taxes	1,008	2,229	4,447	5,198	2,751
減価償却費 / Depreciation	1,822	1,740	1,348	1,369	1,780
減損損失 / Impairment loss	—	73	142	—	230
のれん償却額 / Amortization of Goodwill	79	134	286	1	1,415
負ののれん償却額 / Amortization of Negative Goodwill	(9)	(10)	(9)	(9)	(9)
貸倒引当金の増減額 / Increase (Decrease) in Allowance for Doubtful Accounts	(98)	(51)	(42)	(5)	36
コイン等引当金の増減額 / Allowance for Coin Usage	(38)	(105)	(42)	(46)	(39)
退職給付引当金の増減額 / Increase (Decrease) in Provision for Retirement Benefits	146	(509)	—	—	—
退職給付に係る負債の増減額 / Increase (Decrease) in Net Defined Benefit Liability	—	659	122	139	155
段階取得に係る差損益 / Loss (gain) on step acquisitions	—	—	(33)	—	(693)
持分法による投資損益 / Share of (Profit) Loss of Entities Accounted for Using Equity Method	30	53	95	44	148
固定資産除却損 / Loss on Retirement of Noncurrent Assets	118	109	74	37	87
投資有価証券評価損益 / Loss (Gain) on Valuation of Securities	86	137	39	100	236
投資有価証券売却損益 / Loss (Gain) on Sales of Securities	(44)	1	(734)	—	(154)
売上債権の増減額 / Increase in Accounts Receivable - Trade	(176)	85	(604)	709	288
前渡金の増減額 / Decrease (Increase) in Advance Payments	(126)	38	38	(294)	335
未収入金の増減額 / Decrease (Increase) in Accounts Receivable - Other	(51)	70	(775)	22	(32)
仕入債務の増減額 / Increase (Decrease) in Notes and Accounts Payable - Trade	(291)	34	202	(2)	(56)
未払金の増減額 / Increase in Account Payable - Other	344	(22)	206	(269)	(477)
未払消費税等の増減額 / Increase (decrease) in accrued consumption taxes	29	238	52	(79)	(198)
法人税等の支払額または還付額 / Income Taxes Paid	172	(894)	(973)	(1,993)	(2,256)
その他 / Other	482	(409)	748	(77)	(105)
投資活動によるキャッシュ・フロー / Cash Flows from Investing Activities	(2,389)	(1,867)	(1,707)	(1,327)	(3,874)
有形固定資産の取得による支出 / Payment for Tangible Fixed Assets	(19)	(17)	(34)	(62)	(144)
無形固定資産の取得による支出 / Payment for Intangible Fixed Assets	(2,112)	(1,677)	(1,394)	(1,754)	(1,708)
無形固定資産の売却による収入 / Proceeds from Sales of Intangible Assets	—	—	—	211	—
投資有価証券の取得による支出 / Payment for Purchases of Investment Securities	(3)	(140)	(106)	(223)	(2,044)
投資有価証券の売却による収入 / Proceeds from Sales of Investment Securities	—	15	—	734	152
投資有価証券の償還による収入 / Proceeds from redemption of investment securities	—	—	—	—	249
関係会社株式の取得による支出 / Purchase of Shares of Subsidiaries and Associates	(487)	—	(60)	(213)	(120)
関係会社株式の売却による収入 / Proceeds from Sales of Shares of Subsidiaries and Associates	226	1	—	—	—
連結の範囲の変更を伴う子会社株式の取得による収入 / Proceeds from purchase of shares of subsidiaries resulting in change in scope of consolidation	—	26	0	—	—
連結の範囲の変更を伴う子会社株式の取得による支出 / Purchase of Shares of Subsidiaries Resulting in Change in Scope of Consolidation	—	—	(68)	—	(209)
連結の範囲の変更を伴う子会社株式の売却による支出 / Payments for sales of shares of subsidiaries resulting in change in scope of consolidation	—	(48)	(21)	—	—
その他 / Other	6	(27)	(24)	(20)	(49)
財務活動によるキャッシュ・フロー / Cash Flows from Financing Activities	(414)	(375)	3,921	(2,469)	(2,068)
長期借入れによる収入 / Proceeds from Long-term Debt	500	99	—	—	—
長期借入金の返済による支出 / Repayment of Long-term Debt	(99)	—	(7)	(598)	(165)
株式の発行による収入 / Proceeds from Issuance of Shares	—	45	4,581	98	88
自己株式の取得による支出 / Purchase of Treasury Shares	(297)	(0)	—	(1,955)	(1,002)
自己株式の売却による収入 / Proceeds from Sales of Treasury Shares	—	—	—	876	—

連結の範囲の変更を伴わない子会社株式の取得による支出 ／ Payments from changes in ownership interests in subsidiaries that do not result in change in scope of consolidation	—	—	—	—	(101)
配当金の支払額 / Cash Dividends Paid	(517)	(439)	(641)	(890)	(880)
その他 / Other	—	(81)	(11)	0	(5)
現金及び現金同等物に係る換算差額 / ／ Foreign Currency Translation Adjustments on Cash and Cash Equivalents	173	8	24	(44)	21
現金及び現金同等物の増減額 / Net Increase (Decrease) in Cash and Cash Equivalents	852	1,366	6,825	1,004	(2,479)
現金及び現金同等物の期首残高 / Cash and Cash Equivalents at Beginning of Year	2,563	3,416	4,782	11,608	12,613
現金及び現金同等物の期末残高 / Cash and Cash Equivalents at End of Year	3,416	4,782	11,608	12,613	10,133

株式情報 / Stock Information



東証第一部市場 終値ベース / Closing price at TOKYO STOCK EXCHANGE FIRST SECTION

株価推移 / Stock Price Trend

会計年度 / Fiscal Year	2013/09	2014/09	2015/09	2016/09	2017/09
高値 / High	263	560	986	849	776 ^{*1}
安値 / Low	168	224	628	580	608 ^{*1}
終値 / Closing Price	228	536	819	621	675 ^{*1}
出来高(株) / Annual Volume (shares)	69,278,000	142,135,600	116,342,500	79,834,000	35,325,100 ^{*1}

発行済株式数 / Number of Shares Outstanding

会計年度 / Fiscal Year	2013/09	2014/09	2015/09	2016/09	2017/09
期末発行済株式数 / Number of Shares Outstanding at Fiscal Year End	53,475,200	53,621,200	60,226,800	60,549,200	60,854,400 ^{*1}

1株当たり情報 / Per Share Data

会計年度 / Fiscal Year	2013/09	2014/09	2015/09	2016/09	2017/09
1株当たり純資産 / Net Assets per Share	167.32	184.49	281.48	311.13	312.28 ^{*1}
1株当たり当期純利益 / Net Income (Loss) per Share	10.25	26.63	48.52	59.54	26.27 ^{*1}
1株当たり配当金 / Cash Dividends per Share	6.25	8.5	14.0	16.0	16.0 ^{*1}

*1 株式情報は以下の株式分割を考慮した数値を記載しています。 / Stock information is based on the number of shares after the stock splits.

当社は2013年4月1日を効力発生日として普通株式1株につき100株の割合で株式分割を行っています。 / We conducted a 100-for-1 share split which became effective as of April 1, 2013.

当社は2014年4月1日を効力発生日として普通株式1株につき2株の割合で株式分割を行っています。 / We conducted a 2-for-1 share split which became effective as of April 1, 2014.

当社は2015年4月1日を効力発生日として普通株式1株につき2株の割合で株式分割を行っています。 / We conducted a 2-for-1 share split which became effective as of April 1, 2015.

大株主 (上位10名) / Major Shareholders

(2017年9月30日現在 / As of September 30, 2017)

株主名 / Name of Shareholder	持株数 / Shares	議決権比率 / Controlling Share
前多 俊宏 / Toshihiro Maeta	11,856,400	21.75%
株式会社ケイ・エム・シー / KMC, Inc.	10,096,000	18.52%
株式会社エムティーアイ / MTI Ltd.	6,333,128	-
株式会社光通信 / HIKARI TSUSHIN, INC.	5,774,700	10.59%
株式会社インフォサービス / INFOSERVICE, INC.	5,394,900	9.90%
株式会社メディバルホールディングス / MEDIPAL HOLDINGS CORPORATION	1,150,000	2.11%
日本トラスティ・サービス信託銀行株式会社(信託口) / Japan Trustee Services Bank, Ltd.(Trust account)	1,143,900	2.08%
株式会社昭文社 / Shobunsha Publications, Inc.	672,000	1.23%
MSIP CLIENT SECURITIES	626,900	1.15%
日本マスタートラスト信託銀行株式会社(信託口) / The Master Trust Bank of Japan, Ltd.(Trust account)	578,400	1.06%

所有者別分布状況 / Composition of Shareholders by Category

	株式数 / Shares	構成比 / (%)
金融 / Financial Institutions	3,895,300	6.40%
金融商品取引業者 / Securities Companies	511,859	0.84%
その他法人 / Other Corporations	24,439,700	40.16%
外国法人等 / Foreign Corporations	6,082,270	9.99%
個人・その他 / Individuals and Other	19,592,143	32.20%
自己名義株式 / Treasury Stock	6,333,128	10.41%

株主還元指標 / Shareholder Return Data

会計年度 / Fiscal Year	2013/09	2014/09	2015/09	2016/09	2017/09
配当性向 / Payout Ratio	61.0	31.9	28.9	26.9	60.9
総還元性向 / Return to Shareholders Ratio	118.4	32.0	30.5	59.0	130.5

配当性向 = 1株当たり配当金 ÷ 1株当たり当期純利益 × 100

Payout Ratio = Cash Dividends per Share ÷ Net Income per Share × 100

総還元性向 = (配当金総額 + 自社株式取得総額) ÷ 当期純利益 × 100

Return to Shareholders Ratio = (Cash Dividends + Share Buybacks) ÷ Net Income × 100

会社概要／Corporate Profile

2017年9月30日現在／As of September 30, 2017

商号	株式会社エムティーアイ	Corporate Name	MTI Ltd.
住所	〒163-1435 東京都新宿区西新宿三丁目20番2号 東京オペラシティタワー35階 03-5333-6789	Head Office	35th Floor, Tokyo Opera City Tower 3-20-2 Nishi-Shinjuku, Shinjuku-ku, Tokyo 163-1435, Japan +81-3-5333-6789
設立	1996年8月12日	Founded	August 12, 1996
従業員数(連結)	993 名	Number of Employees(Consolidated)	993
資本金	5,069 百万円	Paid in Capital	5,069 million
決算期	9月30日	Fiscal Year End	September 30
会社が発行する株式の総数	179,040,000 株	Number of Shares Authorized	179,040,000 shares
発行済株式総数	60,854,400 株	Number of Shares Outstanding	60,854,400 shares
株主数(自己株式含む)	4,138 名	Number of Shareholders	4,138
単元株式数	100 株	Stock Transaction Unit	100 share
上場市場	東京証券取引所(市場第一部)	Stock Listing	TOKYO STOCK EXCHANGE, FIRST SECTION
証券コード	9438	Stock Code	9438